

# Henry County Data Center



\*Example image. Not actual construction plans



# What is a Data Center?

- Data centers power the internet—from streaming and mobile apps to emergency services and businesses.
- Every message, email, video call, and online purchase runs through a data center.
- They house all of the data and analysis that help manufacturing be more efficient, medical breakthroughs possible and increase agricultural yields, among lots more.
- Brings technology closer to the community, making services faster, more reliable and more capable.



# How Does This Benefit Henry County?

✓ **\$14.4 million annually** in tax revenue for infrastructure, schools, and county services.

✓ **\$5.6 million annually** for schools, funding better resources, teacher salaries, and technology programs.

✓ Creates **higher-paying tech jobs** and shifts the workforce from warehouses to skilled industries.

✓ Improves internet access, data storage and analysis, supporting **medical research & diagnosis, agriculture, education, and emergency services**



# What The Data Center Will Do

- ✓ Invest **\$130.5 million in power** infrastructure upgrades
- ✓ Increase power availability **without raising electric bills**
- ✓ Create **90** permanent jobs averaging **\$80K** salaries
- ✓ Supports **education, business, healthcare, emergency services** and much more



# What The Data Center WILL NOT Do



- ✗ Will **NOT** drain local water supplies
- ✗ Will **NOT** increase residents' electric bills
- ✗ Will **NOT** cause pollution or industrial waste
- ✗ Will **NOT** create traffic congestion or bring tractor-trailers



# Addressing Common Concerns

## ? Will it be noisy?

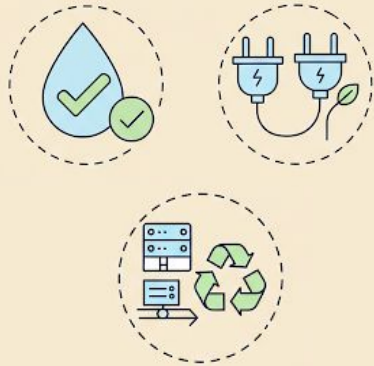
- ◆ **No** — Modern designs include soundproofing, acoustic walls, and vibration dampers.

## ? Will it use a ton of water?

- ◆ **No** — It uses a closed-loop cooling system, so there's no continuous draw on water supplies.

## ? Will it affect my electric bill?

- ◆ **No** — Instead, it will improve power availability for the county.





# Community & Environmental Commitments

🌿 **Adding trees** and shrubs to improve aesthetics and **reduce noise**

🌿 **Preserving** the local pond and **historic cemetery**

🌿 Meets all environmental regulations — **no industrial** waste discharge

## **We heard you - Incorporating Your Feedback**

🌿 **Public walking path and open space**, providing a safe, green space for relaxation and recreation.

🌿 Redesigned plan moves buildings **further away from Harvest Point** church.



Actual Construction Renderings



# Proposed Site Plan - Simpson Mill Road





# Proposed Site Plan - Park Rendering





# Proposed Site Plan - Rocky Creek Road



# A Smart Future for Henry County

- **Tax revenue** for infrastructure upgrades and repairs, better schools, county services and much more.
- More jobs and more long-term career opportunities for residence.
- A low-impact, essential, addition with **high-impact community benefits.**
- A data center isn't just about technology—it's about **investing in the future of your community.**





# Let's Talk!

